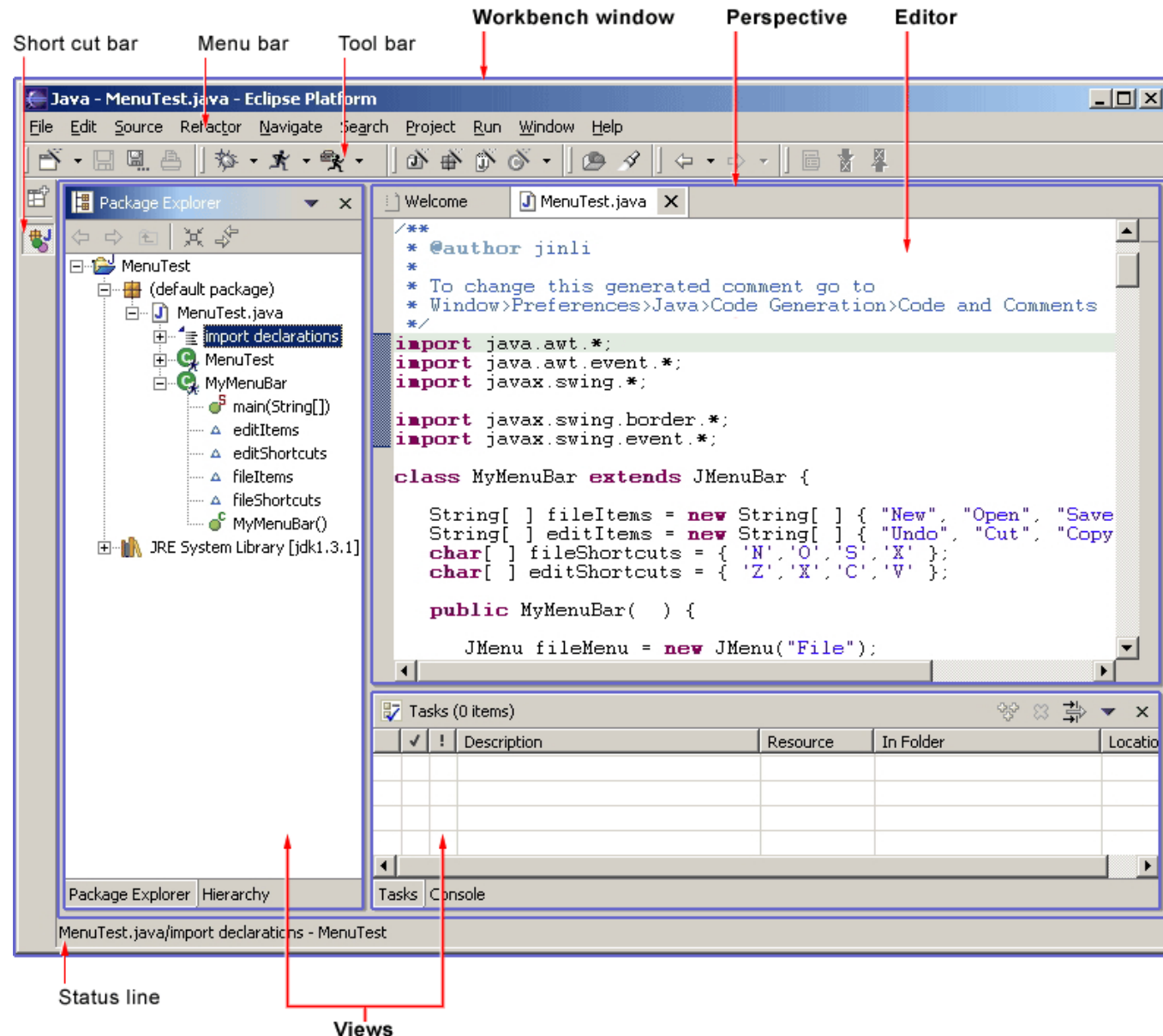


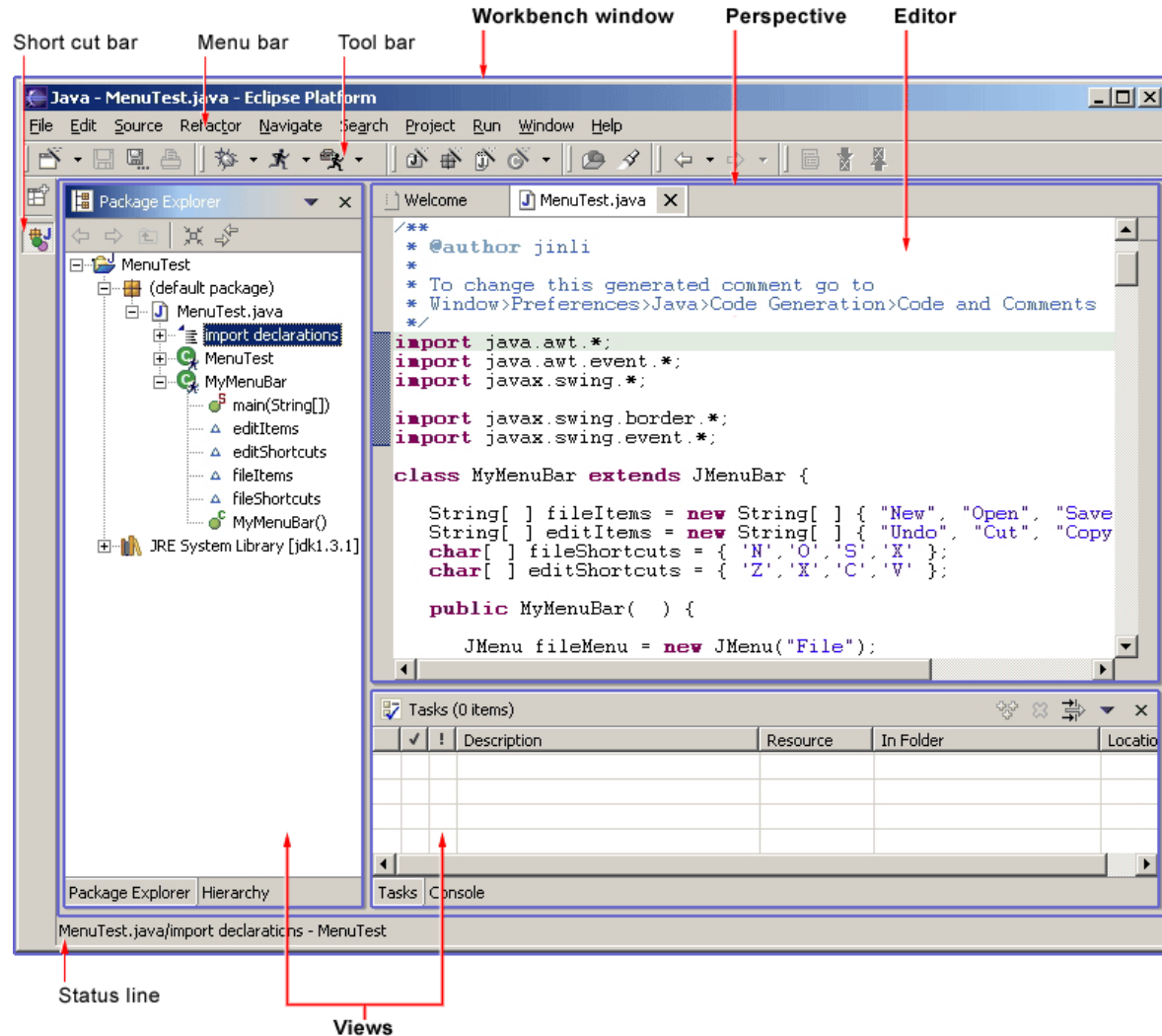
Eclipse User Interface Guidelines: Views, Perspectives, Parts, Editors, etc.

<http://www.eclipse.org/articles/Article-UI-Guidelines/Contents.html>

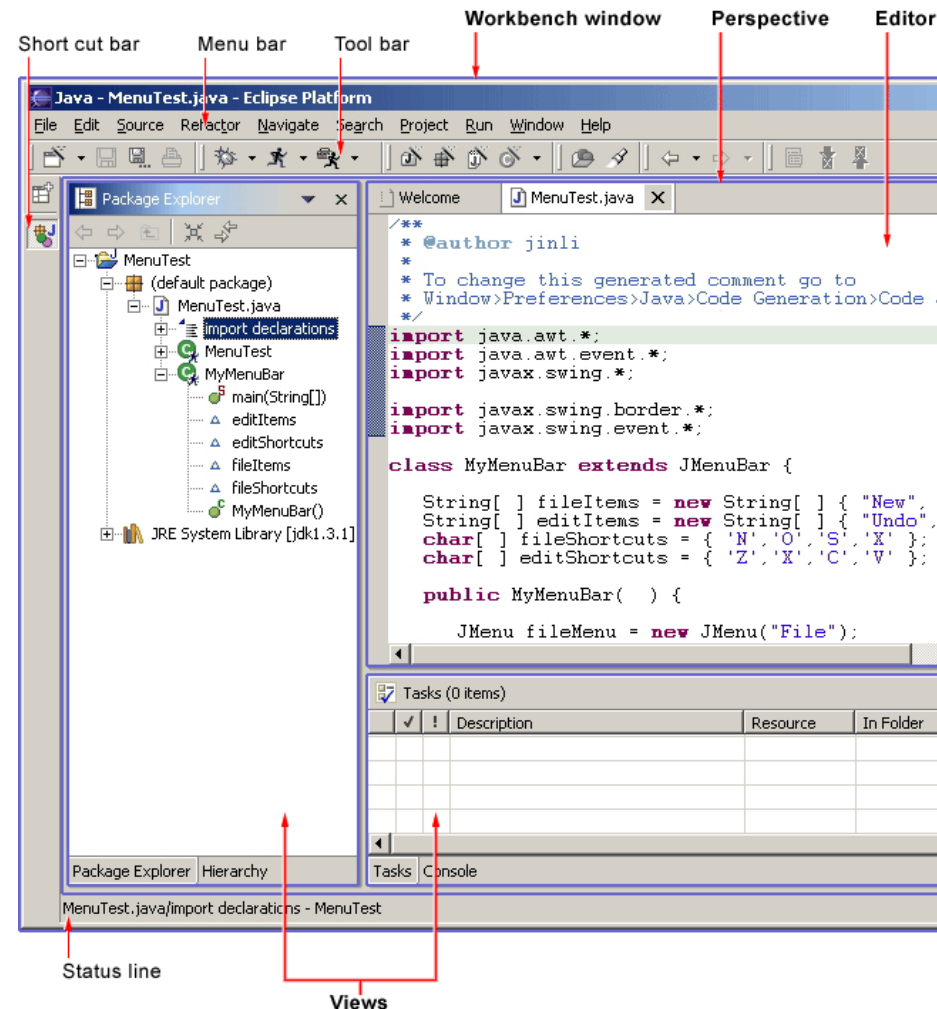
- **Workbench:** collection of windows.
- Each **window** contains:
 - a **menu bar**
 - a **toolbar**
 - a **shortcut bar**
 - and one or more **perspectives**
- One **active part** at a time



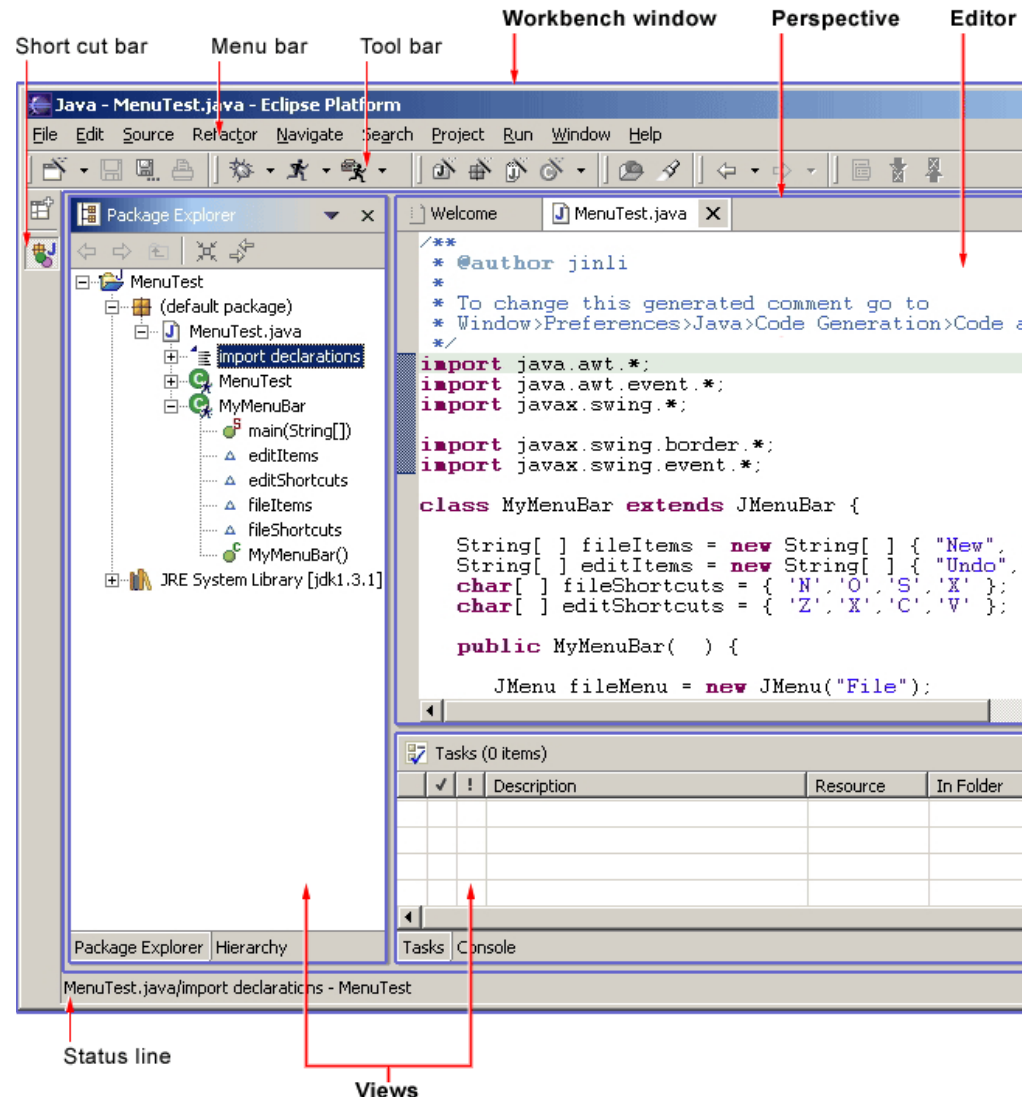
- A visual container for a set of **views** and content **editors**
- Like a page within a book
- Only one **perspective** is visible at any time



- **Contains the primary content**, such as a document or data object , which users interact with
- content is the primary focus of attention and a reflection of the **primary task**
- primary position in the UI
- **contributes commands** to the workbench's main menu bar and toolbar
- **shared** in other perspectives



- **support** the primary task
 - navigate a hierarchy of information
 - open an editor
 - view/edit properties
- The **views** exist wholly within the **perspective** (not shared, one instance at a time)





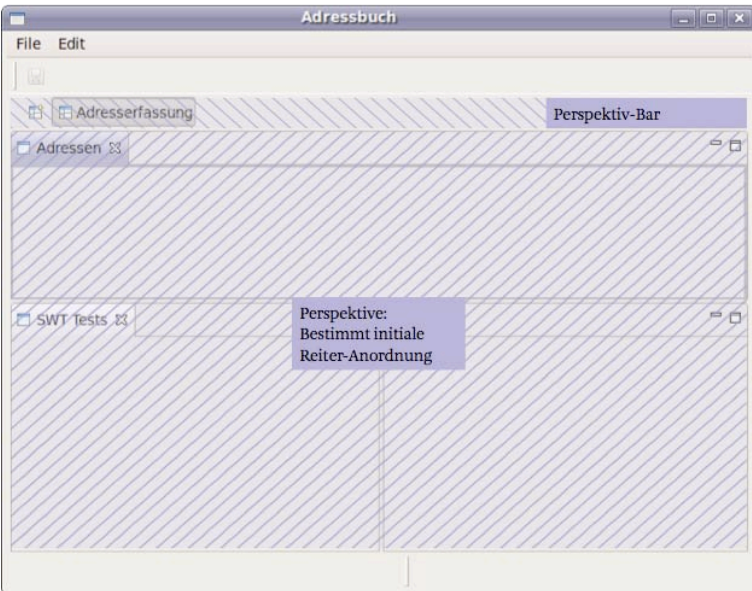
Workbench



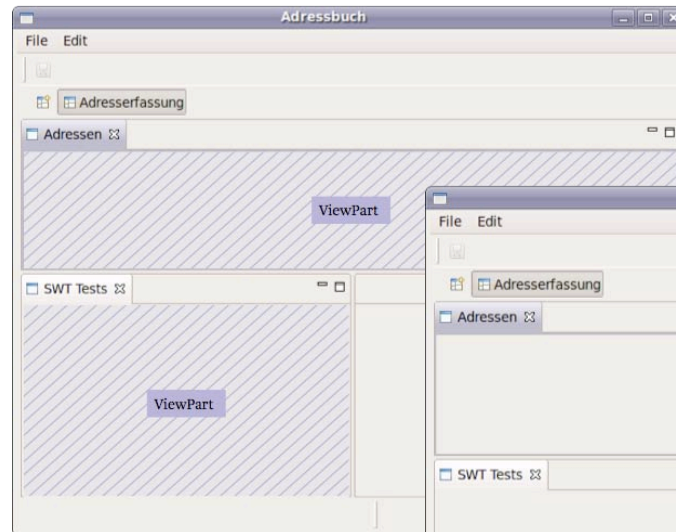
Window



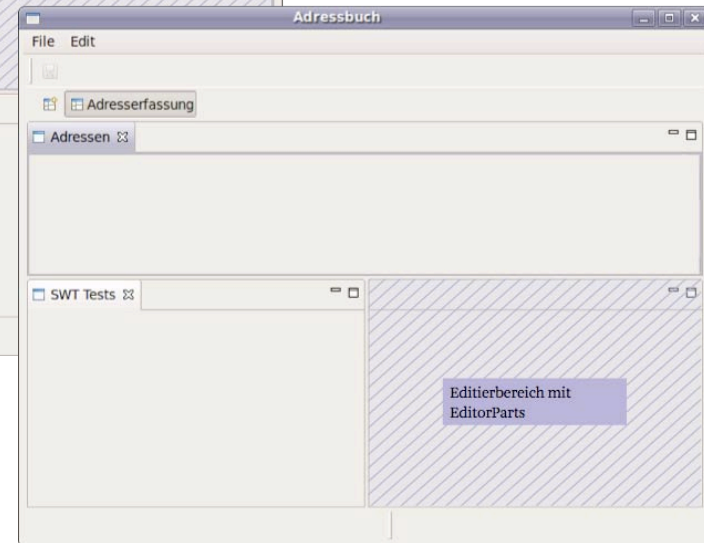
Page



Perspective



View



Editor

Summary II: class diagram

