

11/10/2012

BlueBerry Examples

Michael Brehler

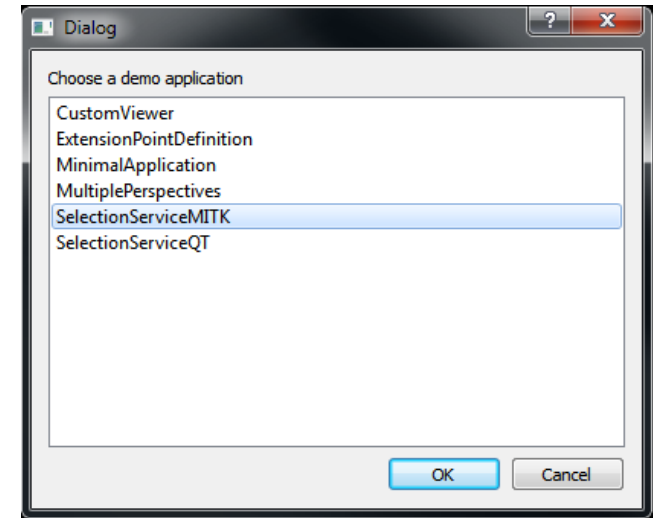


**GERMAN
CANCER RESEARCH CENTER**
IN THE HELMHOLTZ ASSOCIATION

Platform Project:

- Minimal Examples + BlueBerry Terms
- **Selection Service**
- **Extension Points**

- Where are the examples?
- Where is the documentation?

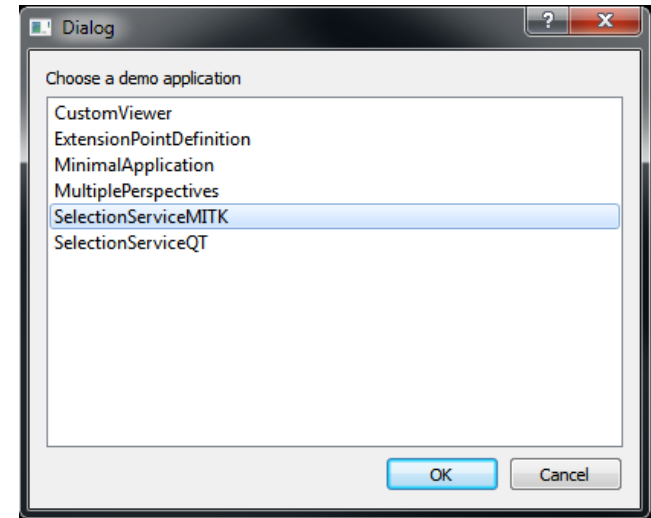
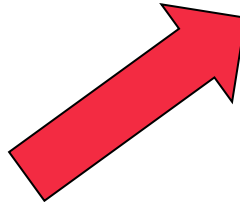


Platform Project:

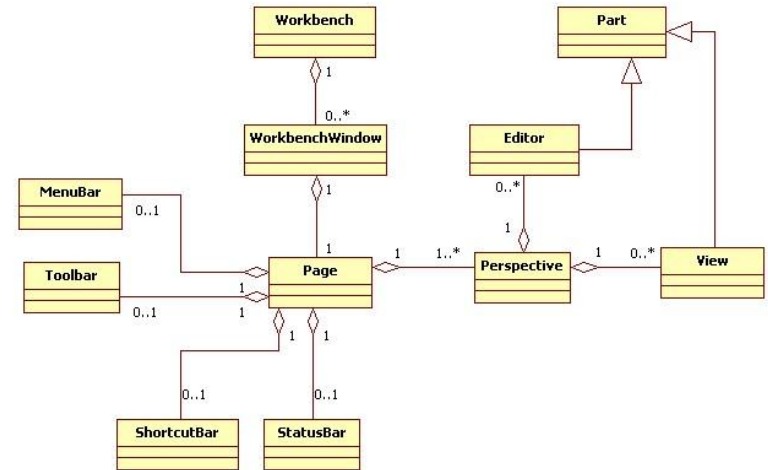
- Minimal Examples + BlueBerry Terms
- **Selection Service**
- **Extension Points**

- Where are the examples?
- Where is the documentation?

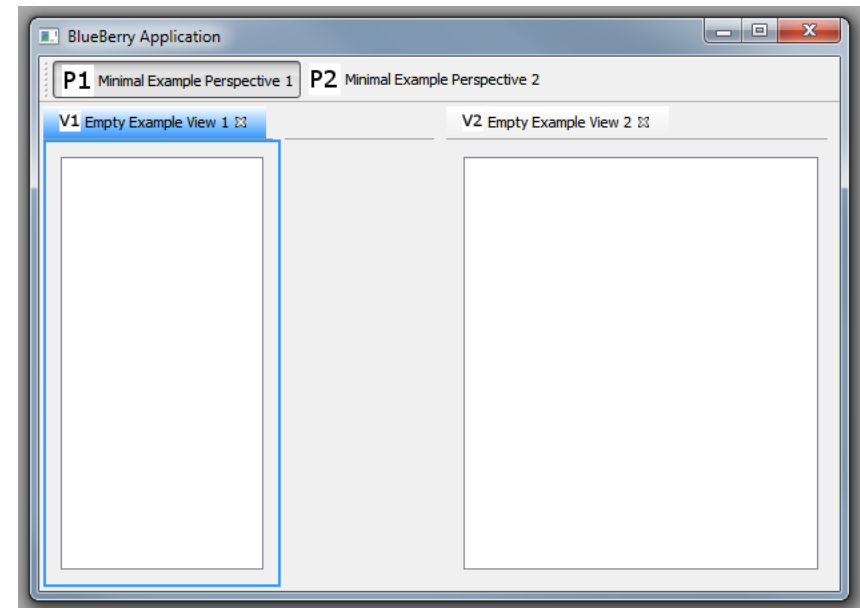
- How do I start an example?
 - **AppFrameworkDemo**



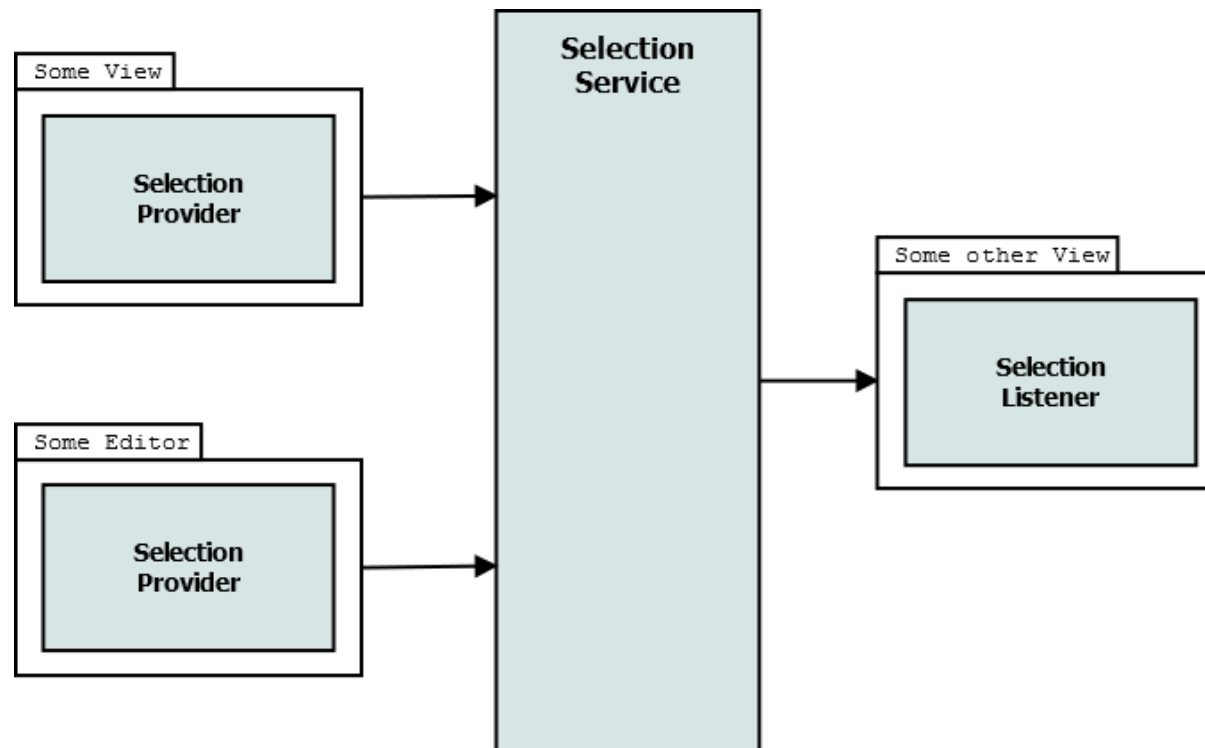
- Minimal Application Examples
- Explain the concept
- Explain the basic BlueBerry terms
 - Workbench, Window, Page
 - Perspectives
 - Parts: Editor, View
 - ...



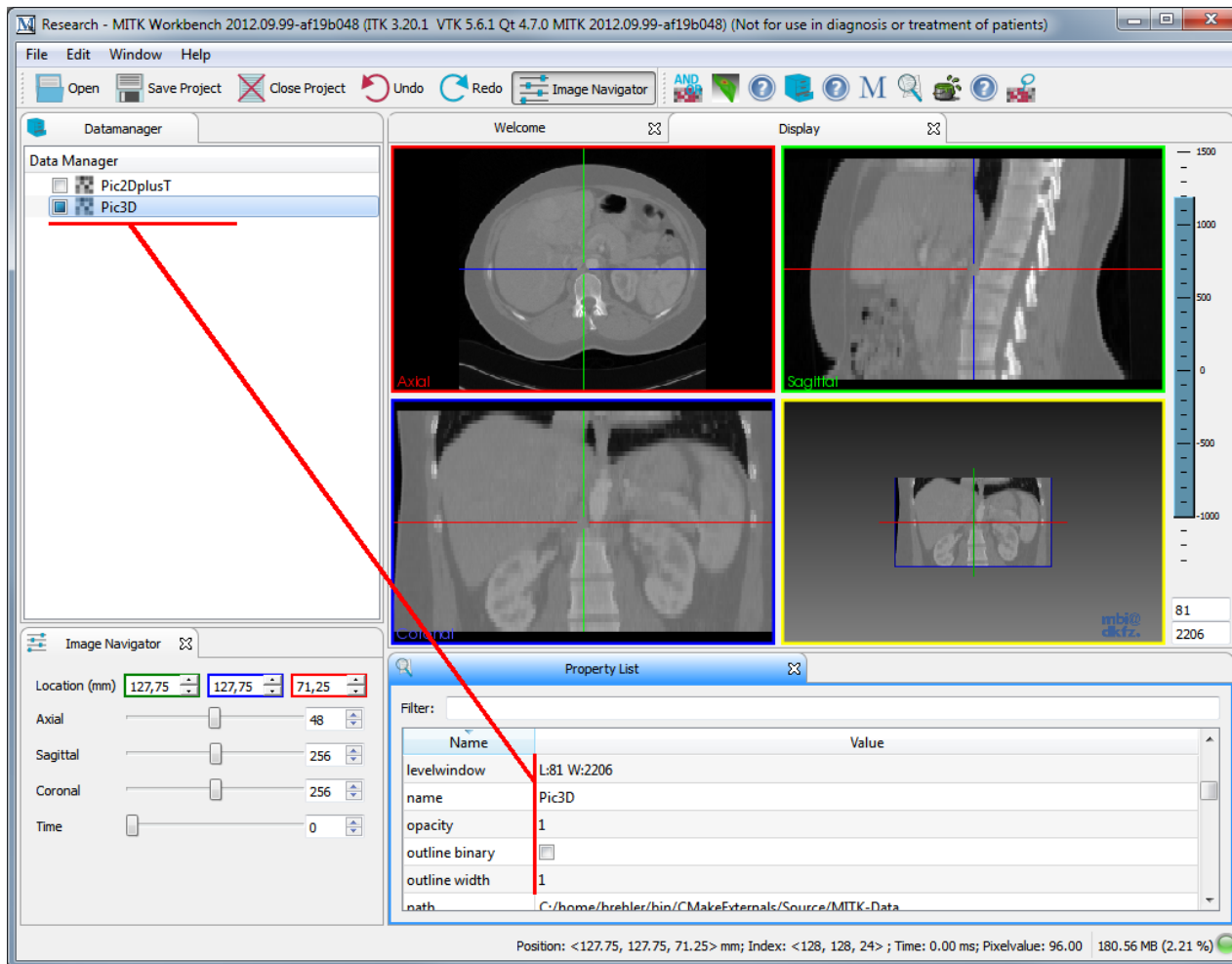
- MITK:
 - View = DataManager
 - Editor = StdMultiWidget



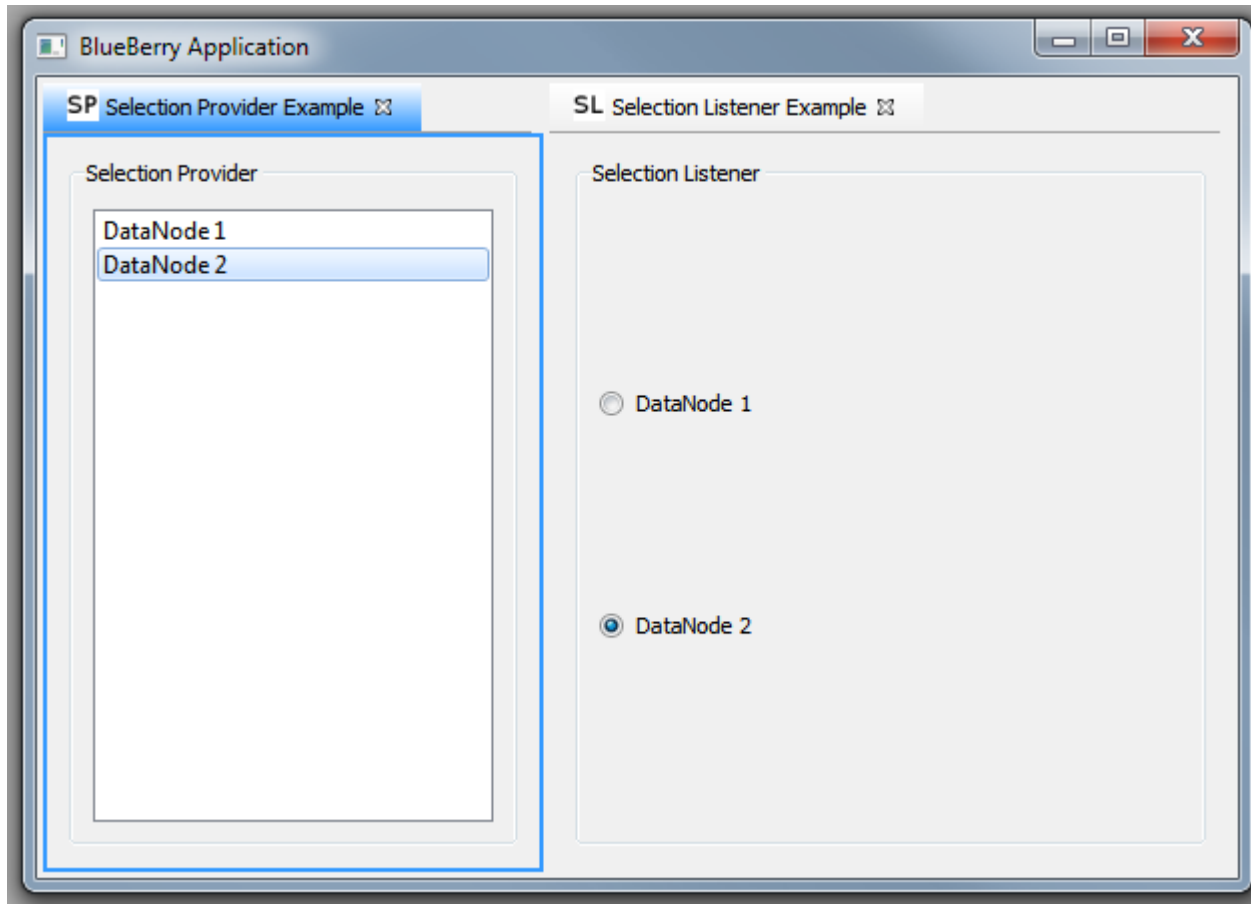
- The **Selection Service** keeps track of the selection in the currently active part
- *Selection Providers* are viewers like table or tree widgets
- *Selection Listeners* listen for selection changes



- For example the "Properties" view in MITK



- Two documented examples:
 - Qt-based selection service
 - MITK Data Node Selection



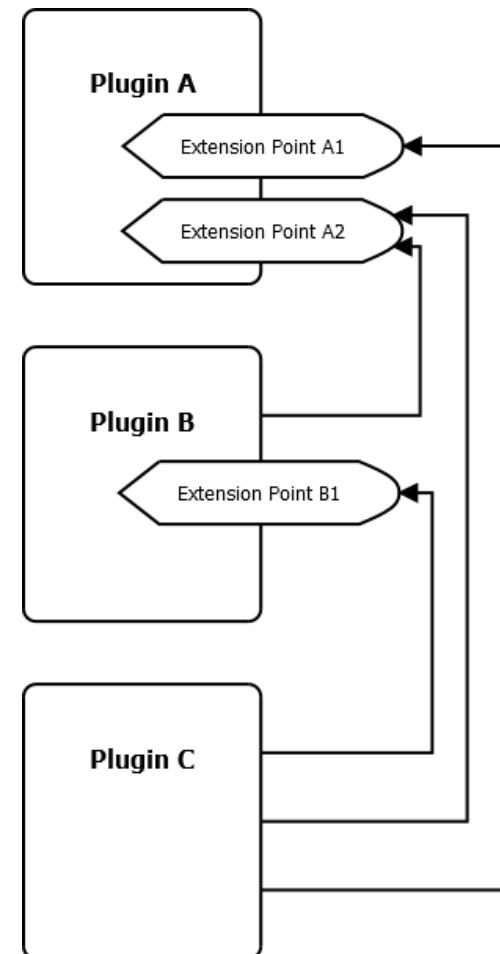
- BlueBerry provides *extension points* and *extensions* to allow functionality to be contributed to plug-ins by several other plug-ins.

Extension Point:

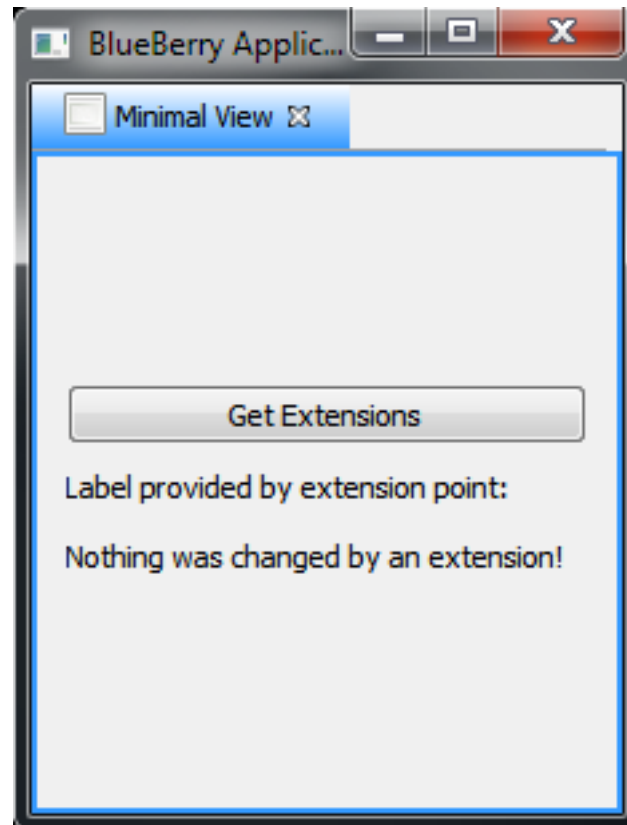
- Plug-in allows other plug-ins to add functionality based on the contract defined by the *extension point*

Extension:

- Other plug-ins add a contribution (*extension*) to an existing extension point



- Simple example application



- Simple example application
- Changes the label text if an extension is collected by the registry

